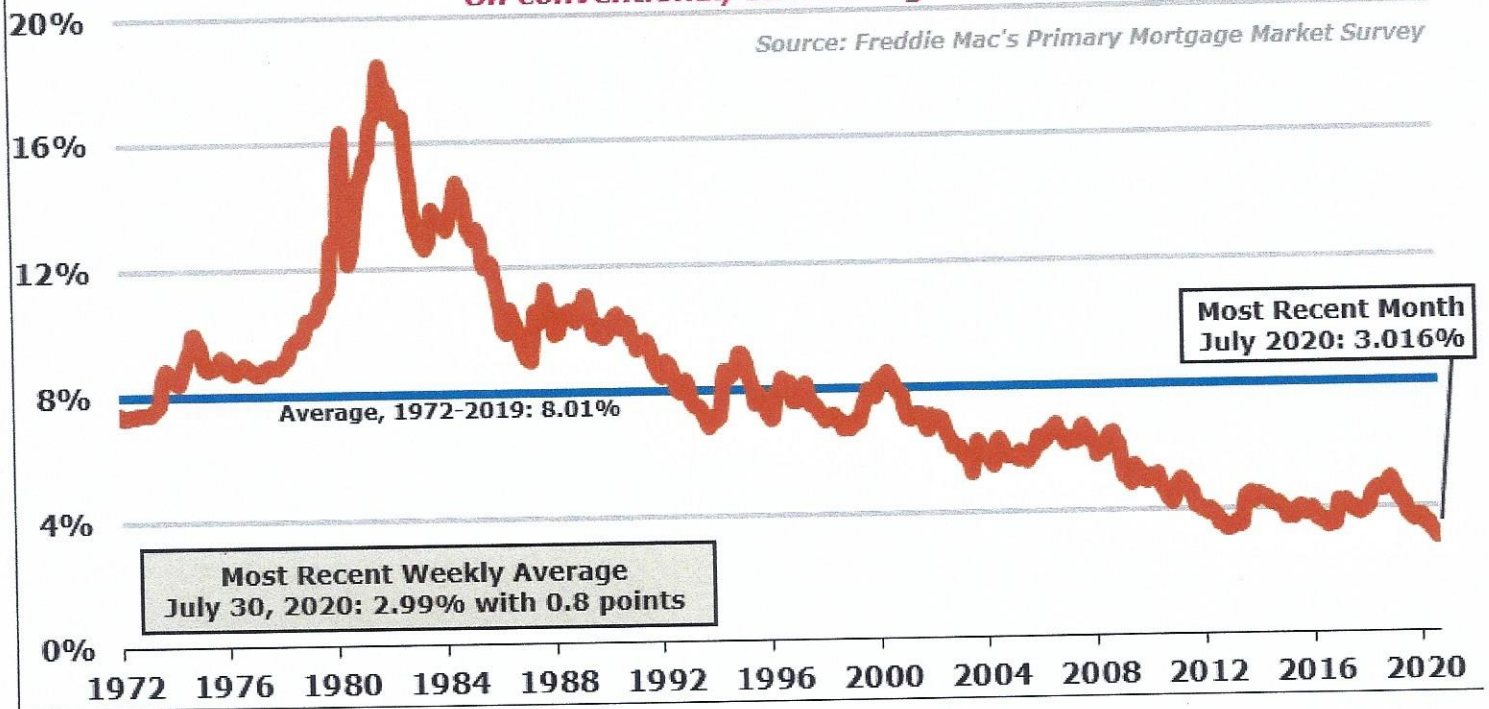


Rates on 30-year fixed-rate mortgages

On conventional, conforming loans

Source: Freddie Mac's Primary Mortgage Market Survey



Annual Averages								Monthly Averages		
1972	7.38%	1985	12.43%	1998	6.94%	2011	4.45%	2019	July	3.77%
1973	8.04%	1986	10.19%	1999	7.44%	2012	3.66%		August	3.62%
1974	9.19%	1987	10.21%	2000	8.05%	2013	3.98%		September	3.61%
1975	9.05%	1988	10.34%	2001	6.97%	2014	4.17%		October	3.69%
1976	8.87%	1989	10.32%	2002	6.54%	2015	3.85%		November	3.70%
1977	8.85%	1990	10.13%	2003	5.83%	2016	3.65%		December	3.72%
1978	9.64%	1991	9.25%	2004	5.84%	2017	3.99%	2020	January	3.62%
1979	11.20%	1992	8.39%	2005	5.87%	2018	4.54%		February	3.47%
1980	13.74%	1993	7.31%	2006	6.41%	2019	3.94%		March	3.45%
1981	16.63%	1994	8.38%	2007	6.34%				April	3.31%
1982	16.04%	1995	7.93%	2008	6.03%				May	3.23%
1983	13.24%	1996	7.81%	2009	5.04%				June	3.16%
1984	13.88%	1997	7.60%	2010	4.69%				July	3.02%